

SaCoVLM™

Seeing is believing

Disposable Video Laryngeal Mask



Product Specification

Type	Size	Patient Weight (kg)	ET Tube Max Size OG (mm)	Gastric Tube Max Size (Fr)	Ventilation Tube Max Size OG (mm)
MLM30C	3.0	30-50	7.0	16	5.8
MLM40C	4.0	50-70	7.5	16	5.8
MLM50C	5.0	70-100	8.0	16	5.8
MLM30	3.0	30-50	7.0	16	5.8
MLM40	4.0	50-70	7.5	16	5.8
MLM50	5.0	70-100	8.0	16	5.8

NOTE: THE MODEL WITH C COMES WITH A CLEANING LINE.



SaCoVLM™

Seeing is believing

Disposable Video Laryngeal Mask

ZHEJIANG UE MEDICAL CORP.

✉ EXPORT@UEWORLD.COM

🌐 WWW.UEWORLD.COM/EN.PHP

☎ +86 571 28057363

📍 8 YOUYI RD, BAITA ECONOMIC DEVELOPMENT ZONE, XIANJU, ZHEJIANG 317300, CHINA

SaCoVLM™

Seeing is believing

Disposable Video Laryngeal Mask

Clinical Uses

1. Rapid ventilation for normal and difficult airways
2. Optimal for emergent airways
3. Video-assisted tracheal intubation and extubation
4. The preferred choice for rescue ventilation in various clinical scenarios

Cleaning line

Inflation line

Visual tube channel

Ventilation (intubation) channel

Gastric tube channel

Pre-molded

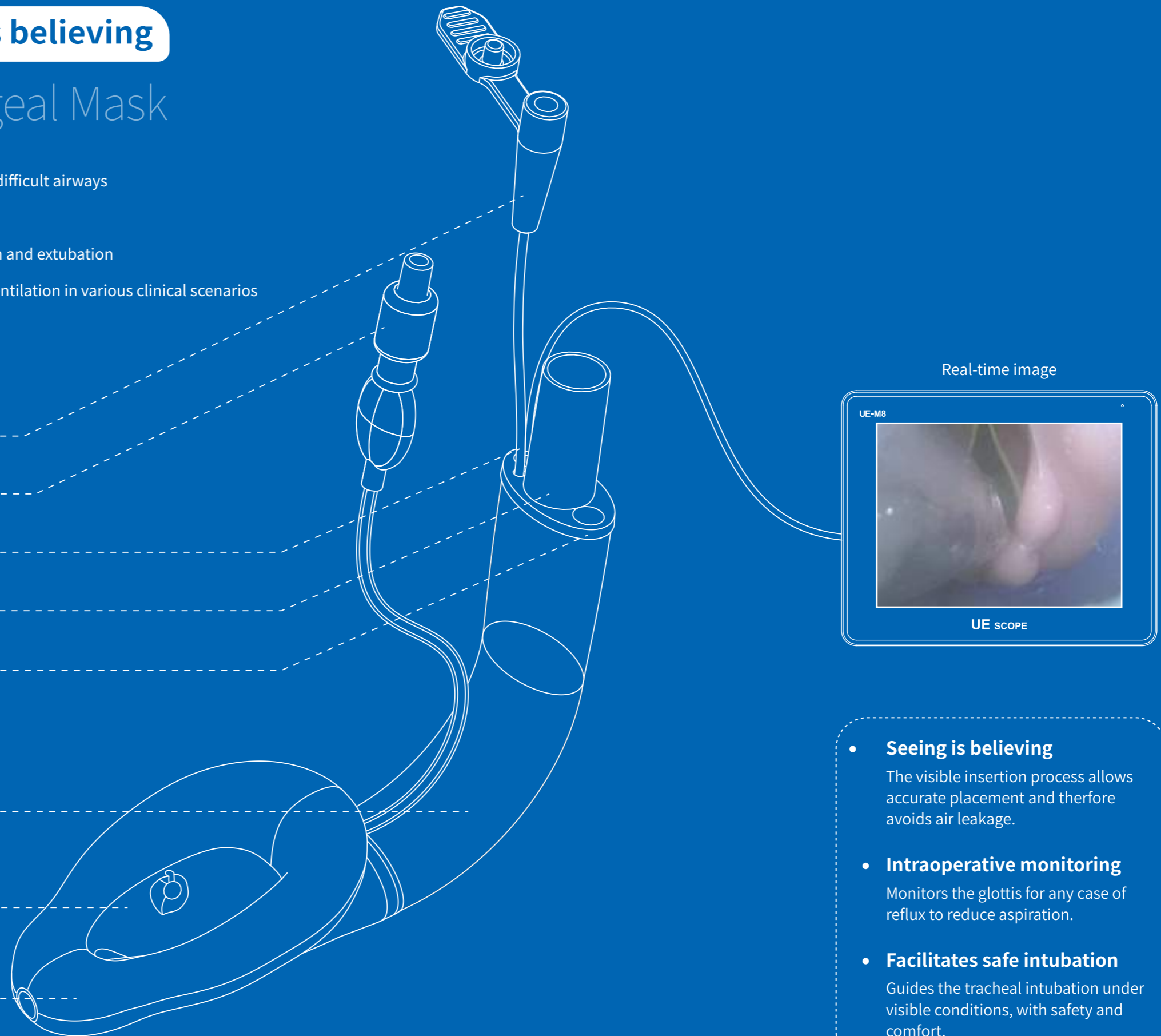
ergonomic & for easier insertion and placement

Unique sloping distal end

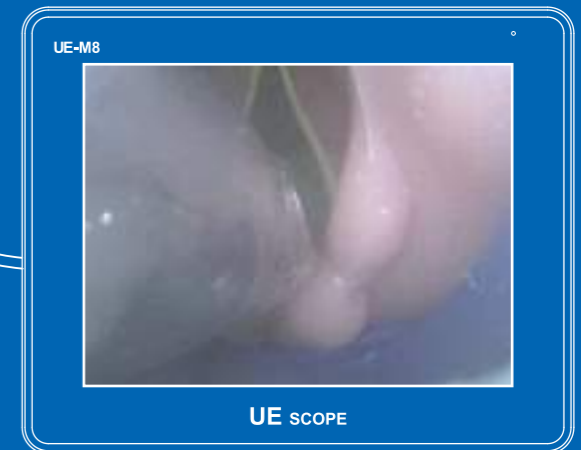
facilitates accurate insertion of ETT

Inflatable cuff

large contact area lowers mucosal pressure & higher airtight seal avoids aspiration



Real-time image



- **Seeing is believing**
The visible insertion process allows accurate placement and therefore avoids air leakage.
- **Intraoperative monitoring**
Monitors the glottis for any case of reflux to reduce aspiration.
- **Facilitates safe intubation**
Guides the tracheal intubation under visible conditions, with safety and comfort.